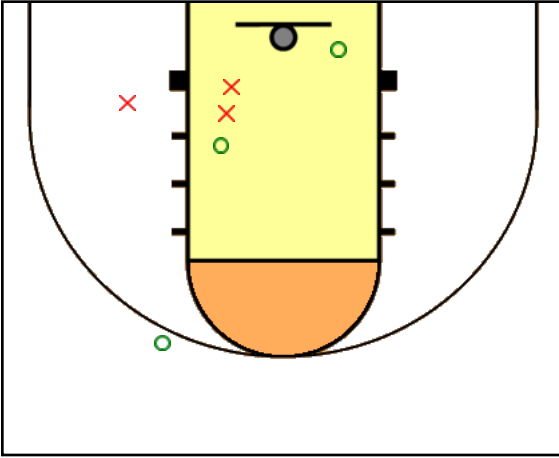


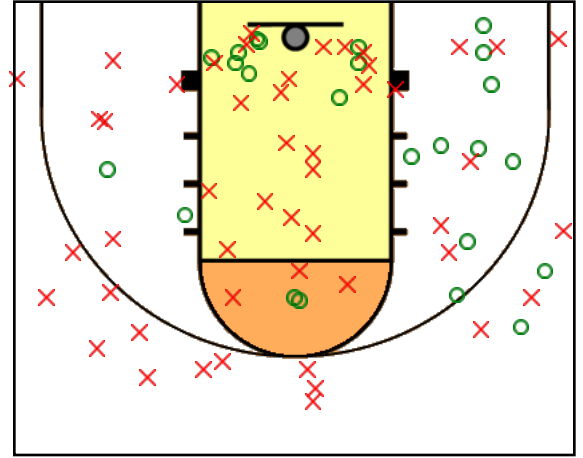
Upton Season Statistics

#0 Louden Brickley Pts: 7 Asst: 1
 2FG: (2-5) 40% 3FG: (1-1) 100% FT: (0-0) 0%



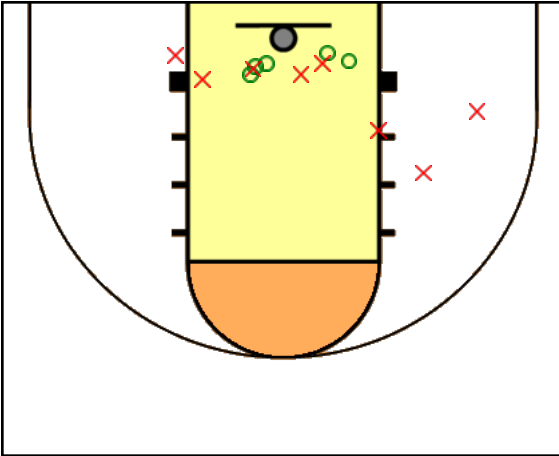
OR:1 DR:0 Stl:1 Foul:2 Blk:0 TO:1

#1 Bryton Materi Pts: 76 Asst: 25
 2FG: (22-55) 40% 3FG: (2-18) 11% FT: (26-38) 68%



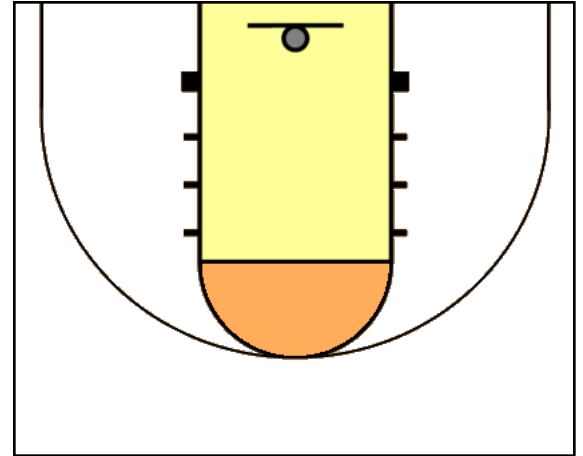
OR:4 DR:14 Stl:17 Foul:27 Blk:1 TO:31

#2 Rourke McPeters Pts: 15 Asst: 5
 2FG: (5-13) 38% 3FG: (0-0) 0% FT: (5-13) 38%



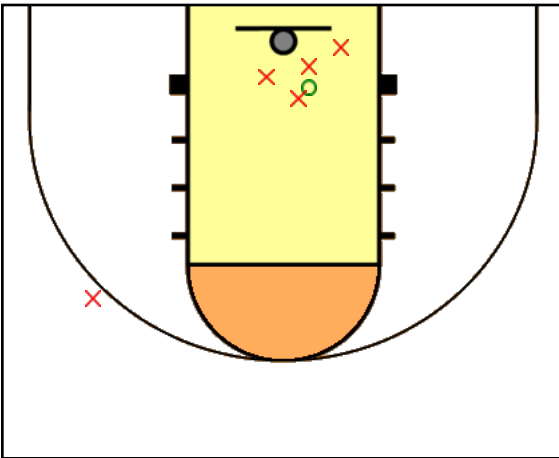
OR:6 DR:3 Stl:1 Foul:2 Blk:0 TO:3

#3 Chase Beyl Pts: 0 Asst: 0
 2FG: (0-0) 0% 3FG: (0-0) 0% FT: (0-0) 0%



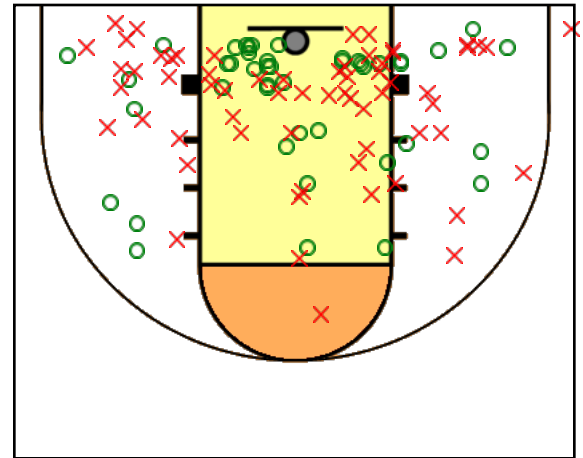
OR:0 DR:0 Stl:0 Foul:0 Blk:0 TO:0

#4 Andrew McMillian Pts: 2 Asst: 2
 2FG: (1-5) 20% 3FG: (0-1) 0% FT: (0-0) 0%



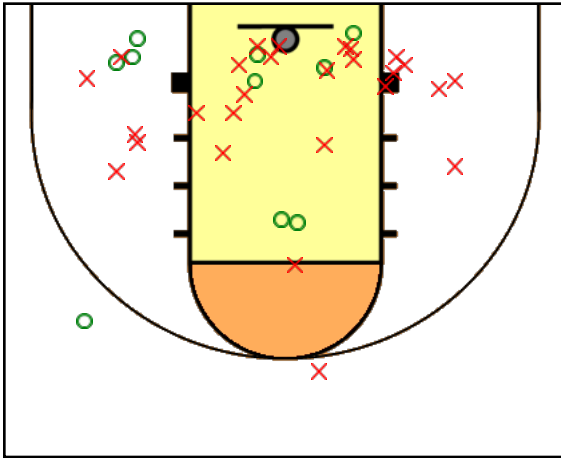
OR:0 DR:1 Stl:1 Foul:0 Blk:0 TO:1

#5 Logan Loberg Pts: 100 Asst: 15
 2FG: (44-106) 42% 3FG: (0-1) 0% FT: (12-24) 50%



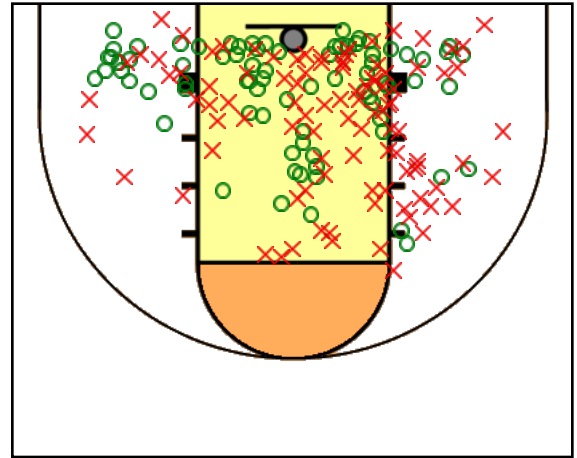
OR:22 DR:45 Stl:18 Foul:32 Blk:7 TO:13

#10 Jett Materi Pts: 32 Asst: 18
 2FG: (9-35) 26% 3FG: (1-2) 50% FT: (11-25) 44%



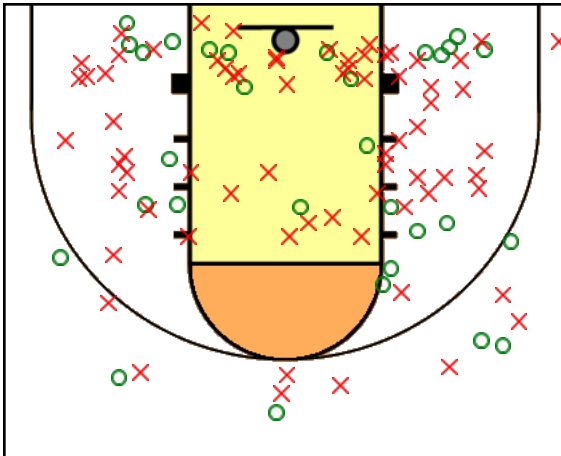
OR:11 DR:22 Stl:14 Foul:18 Blk:0 TO:29

#12 Caleb Garhart Pts: 176 Asst: 13
 2FG: (78-177) 44% 3FG: (0-0) 0% FT: (20-43) 47%



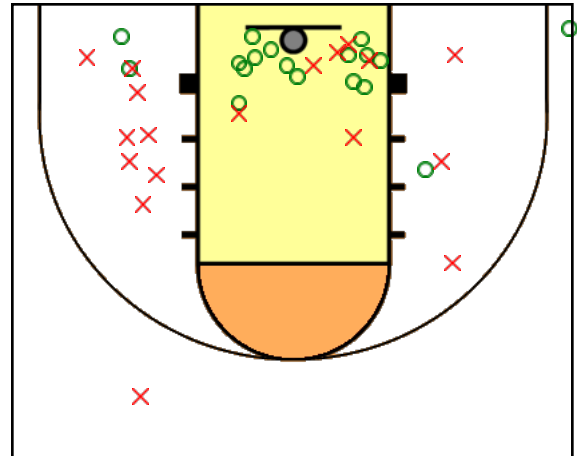
OR:46 DR:61 Stl:18 Foul:30 Blk:7 TO:26

#20 Mike Christensen Pts: 70 Asst: 30
 2FG: (24-85) 28% 3FG: (6-15) 40% FT: (4-20) 20%



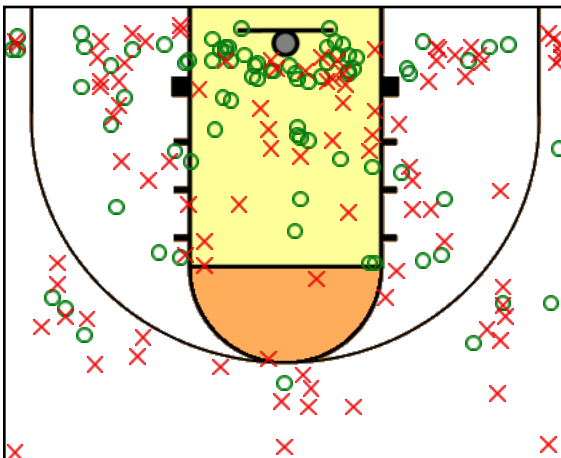
OR:14 DR:21 Stl:25 Foul:15 Blk:3 TO:49

#22 Ty Beck Pts: 41 Asst: 12
 2FG: (17-34) 50% 3FG: (1-3) 33% FT: (4-13) 31%



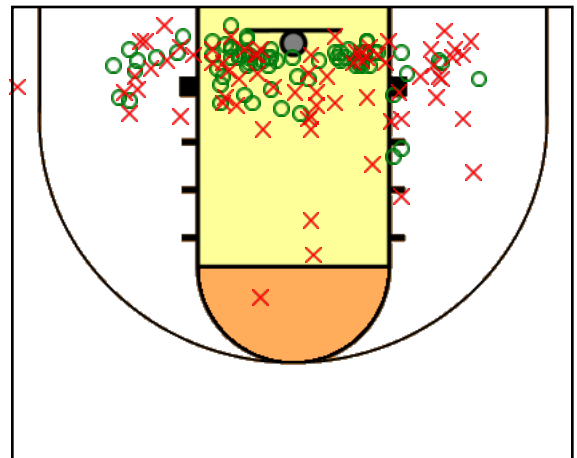
OR:9 DR:6 Stl:18 Foul:19 Blk:2 TO:26

#30 Judd Brost Pts: 210 Asst: 28
 2FG: (69-131) 53% 3FG: (12-46) 26% FT: (36-53) 68%



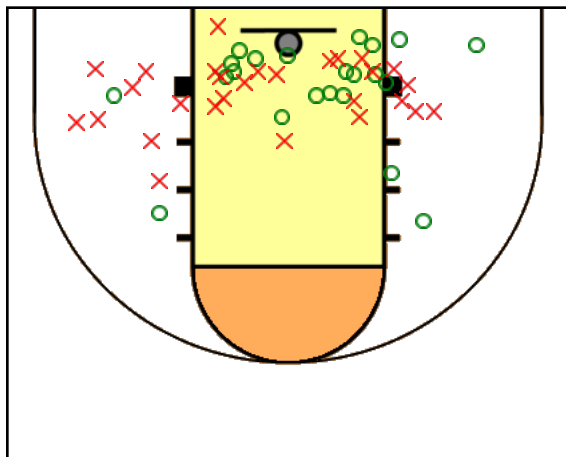
OR:21 DR:50 Stl:17 Foul:28 Blk:4 TO:45

#33 Wyatt Burr Pts: 180 Asst: 22
 2FG: (71-141) 50% 3FG: (0-1) 0% FT: (38-71) 54%



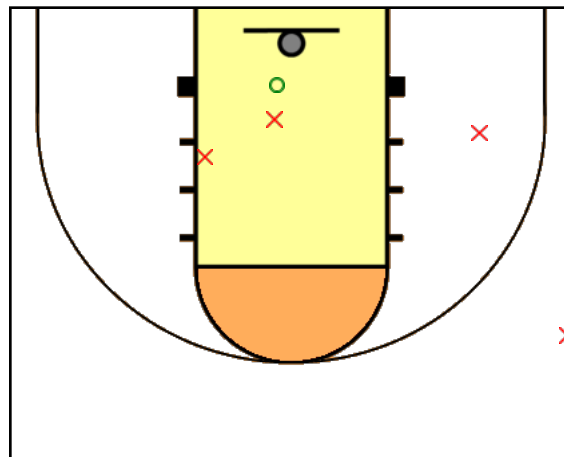
OR:46 DR:43 Stl:30 Foul:37 Blk:10 TO:26

#40 Davis Butts Pts: 54 Asst: 20
2FG: (22-50) 44% 3FG: (0-0) 0% FT: (10-17) 59%



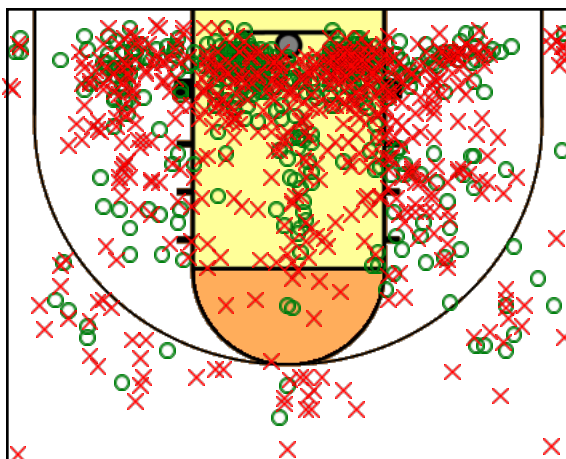
OR:10 DR:14 Stl:11 Foul:23 Blk:2 TO:16

#44 Doug Williams Pts: 2 Asst: 0
2FG: (1-4) 25% 3FG: (0-1) 0% FT: (0-0) 0%



OR:1 DR:2 Stl:1 Foul:0 Blk:0 TO:2

Upton Pts: 965 Asst: 191
2FG: (365-841) 43% 3FG: (23-89) 26% FT: (166-317) 52%



OR:191 DR:282 Stl:172 Foul:233 Blk:36 TO:268

